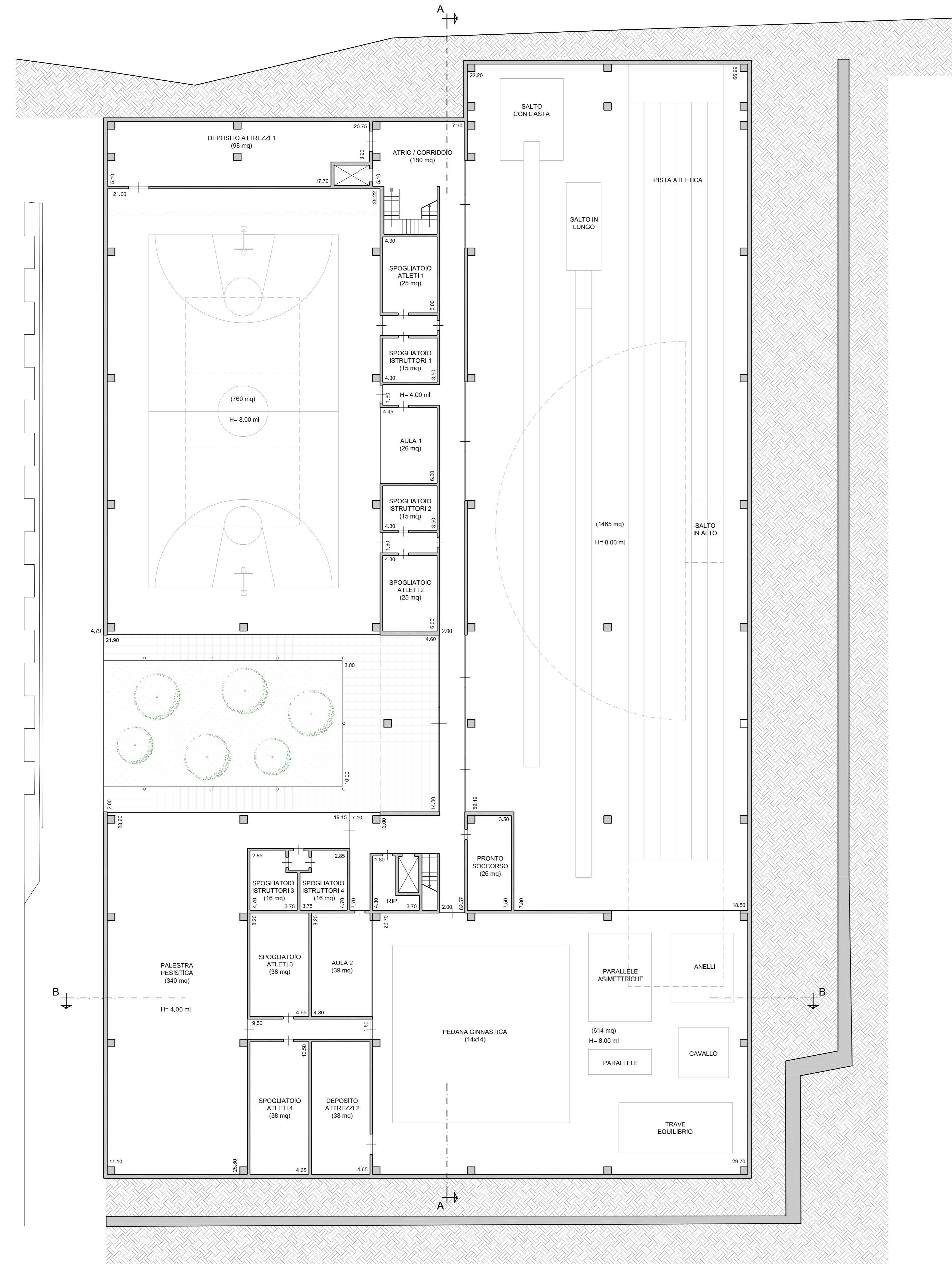
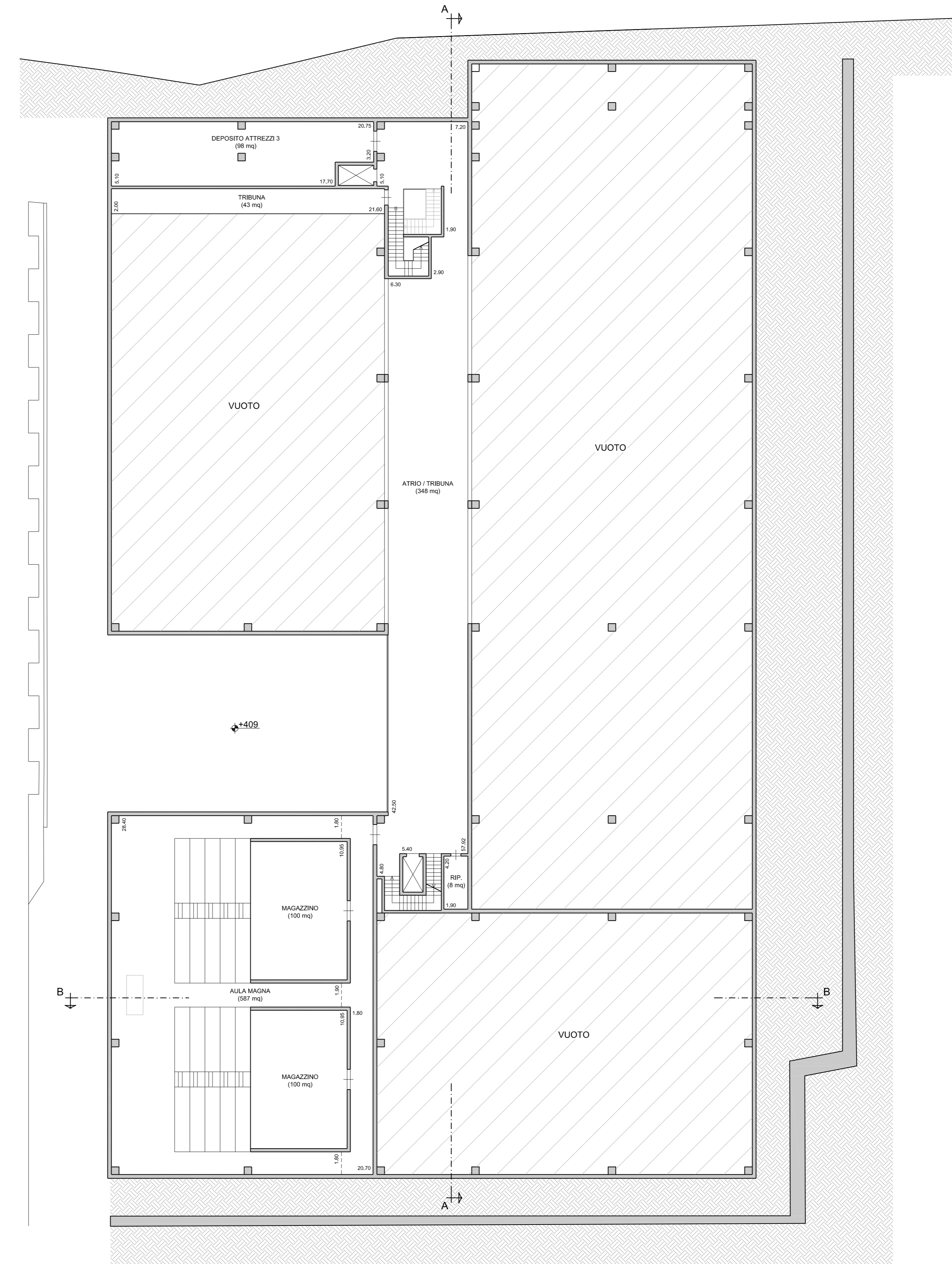


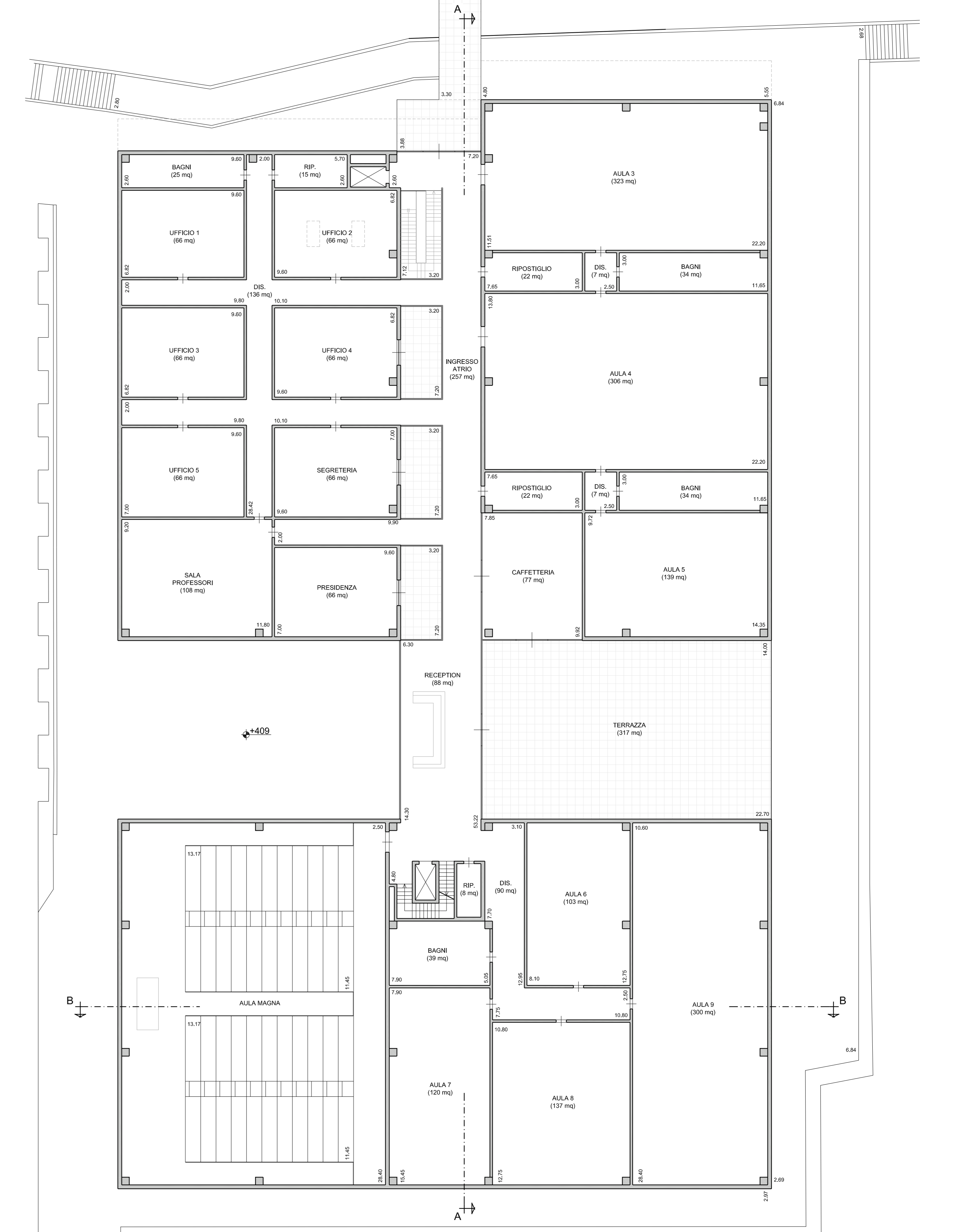
PIANTA PIANO QUOTA +409



PIANTA PIANO QUOTA +413,5



PIANTA PIANO QUOTA +418



SCHEDA E zona F1 Tav. 201.III/B1



PROGETTO URBANISTICO DI DETTAGLIO
SEDE FACOLTA DI SCIENZE MOTORIE
L.R. n° 34/1992, Art. 15, comma 4

I PROGETTISTI: ARCH. GIORGIO GENTILI ING. MAURIZIO TOMMASSINI